



**FITTING INSTRUCTIONS FOR CP0323BL AERO CRASH PROTECTORS**  
**HUSQVARNA 630 SMR 2010-11**

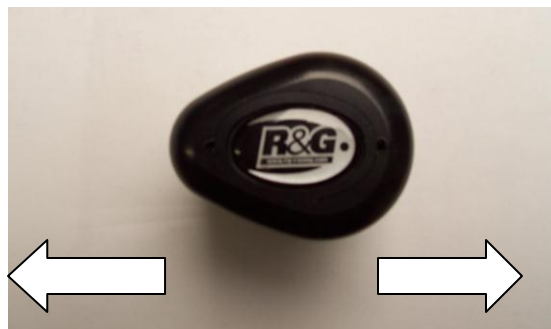
Page | 1



PICTURE 'A'



PICTURE 'B'



REAR OF BIKE

FRONT OF BIKE

PICTURE 'C'

**THIS KIT CONTAINS THE ITEMS PICTURED AND LABELLED BELOW.**  
**DO NOT PROCEED UNTIL YOU ARE SURE ALL PARTS ARE PRESENT.**

**Please note that the way the kit is packed does not necessarily represent the way of mounting to the bike**

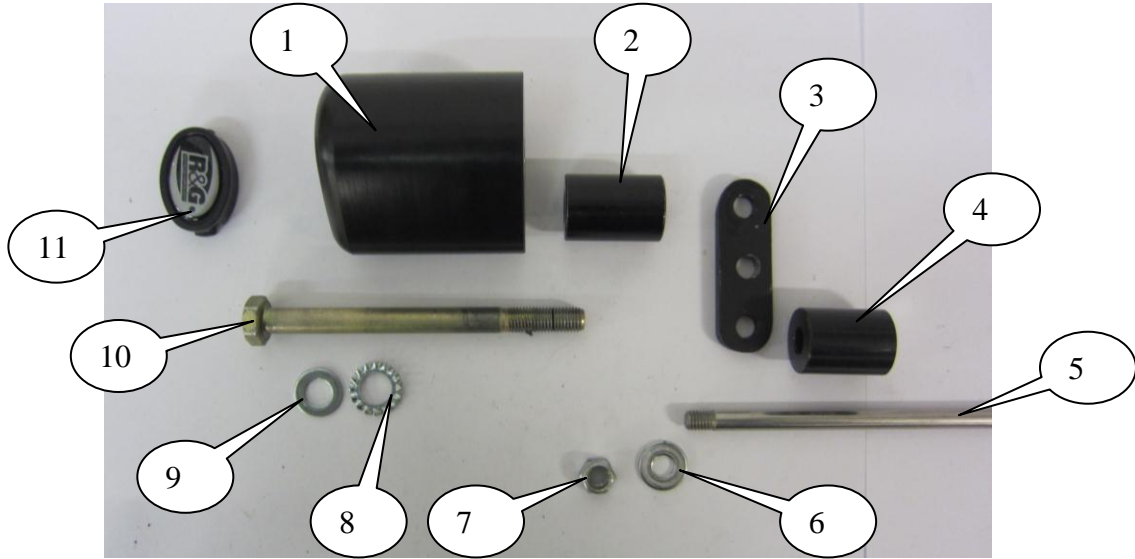
Please note that in cases where kits are packed with rubber washers holding the components onto the bolt – *the rubber washers should be thrown away!*

THE PARTS SHOWN MAY BE REPRESENTATIVE ONLY (FOR CLARITY OF INSTRUCTIONS ONLY)

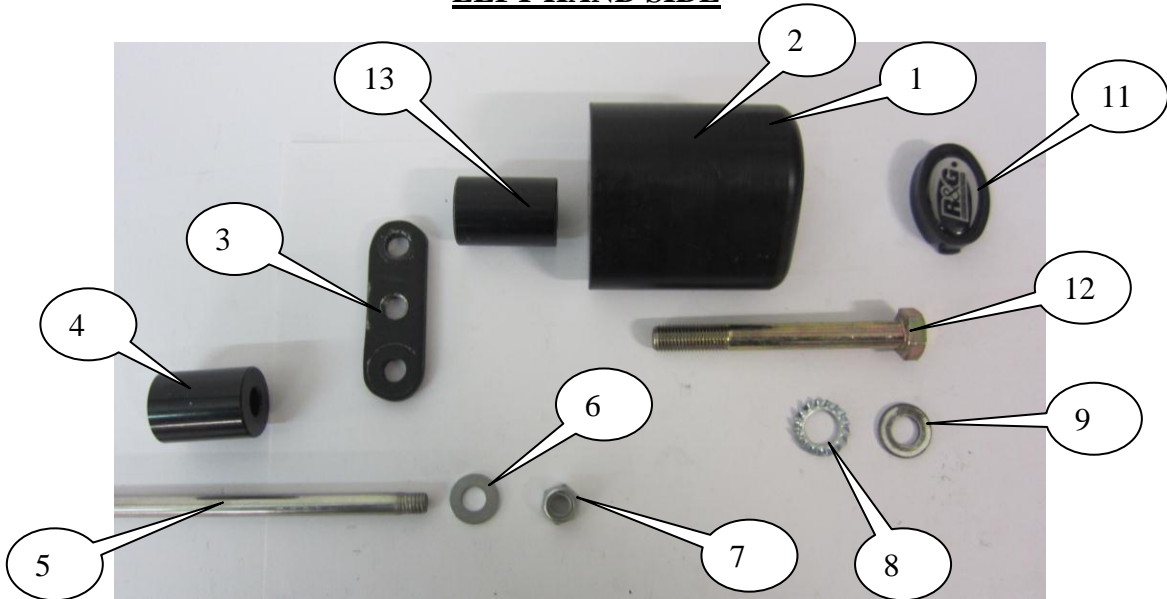
**R&G Racing**

Unit 1 Shelleys Lane, East Worldham, Alton, Hants GU34 3AQ

Tel: +44 (0)1420 89007 Fax: +44 (0)1420 87301 [www.rg-racing.com](http://www.rg-racing.com) Email: [info@rg-racing.com](mailto:info@rg-racing.com)



**LEFT HAND SIDE**



**RIGHT HAND SIDE**

**TOOLS REQUIRED**

- Socket set to include 10, 12, 13(x2) and 17mm A/F socket and wrench.
- Torque wrench (up to 40Nm).

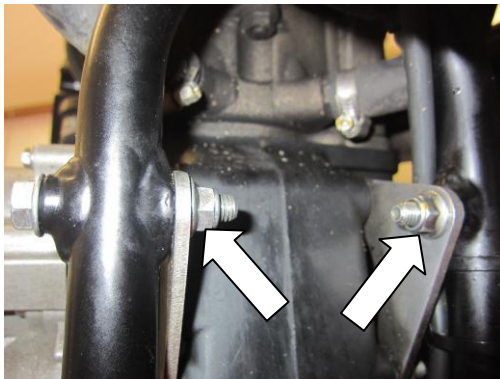
**R&G Racing**

Unit 1 Shelleys Lane, East Worldham, Alton, Hants GU34 3AQ  
Tel: +44 (0)1420 89007 Fax: +44 (0)1420 87301 [www.rg-racing.com](http://www.rg-racing.com) Email: [info@rg-racing.com](mailto:info@rg-racing.com)

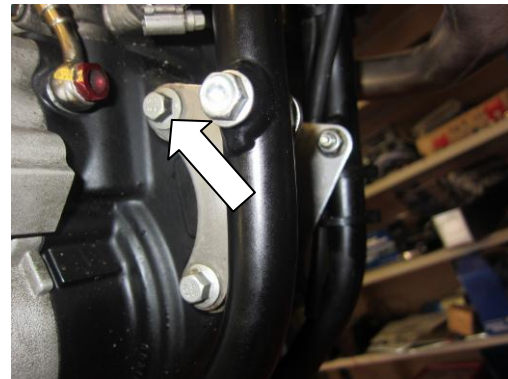


### **LEGEND**

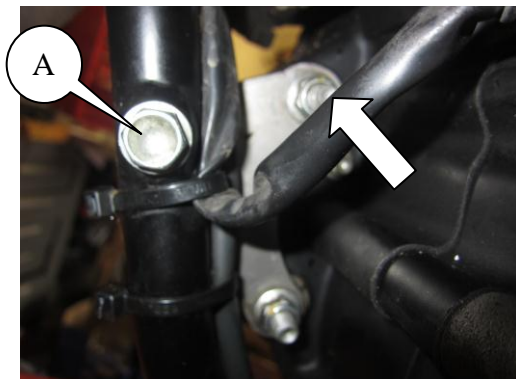
- ITEM 1 = B0061 with CS0341 (10mm) (BOTH CRASH PROTECTORS) (x2).  
ITEM 2 = S0571 62mm LONG SPACER LEFT HAND SIDE (CRASH PROTECTOR SPACER) (x1).  
ITEM 3 = M0330 MOUNTING BLOCK BOTH SIDES (x2).  
ITEM 4 = S0572 32mm LONG SPACER BOTH SIDES (SPANNING SPINDLE SPACER) (x2).  
ITEM 5 = SB098 192mm LONG SPINDLE BAR (SPANNING SPINDLE) (x1).  
ITEM 6 = M8 PLAIN WASHERS (SPANNING SPINDLE) (x2).  
ITEM 7 = M8 NYLOC NUTS (x2).  
ITEM 8 = LW0001 (M12 SHAKE PROOF WASHERS) (x2).  
ITEM 9 = M10 PLAIN WASHERS (CRASH PROTECTOR WASHERS) (x2).  
ITEM 10 = M10x1.25x110mm LONG HEX HEAD BOLT ( L-H-S CRASH PROTECTOR) (x1).  
ITEM 11 = BC0002 CRASH PROTECTOR CAPS (x2).  
ITEM 12 = M10x1.25x90mm LONG HEX HEAD BOLT ( R-H-S CRASH PROTECTOR) (x1).  
ITEM 13 = S0466 36mm LONG SPACER RIGHT HAND SIDE (CRASH PROTECTOR SPACER) (x1).



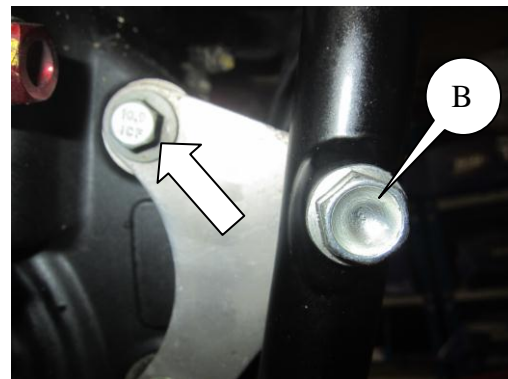
PICTURE 1



PICTURE 2



PICTURE 3



PICTURE 4

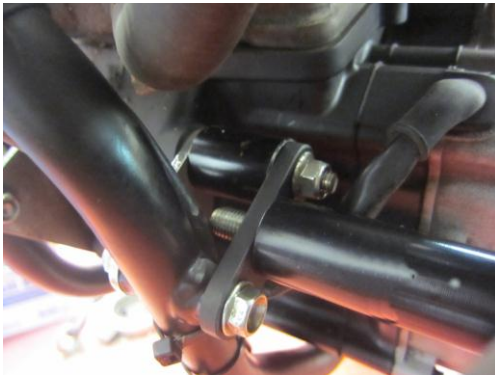
### **R&G Racing**



PICTURE 5



PICTURE 6



PICTURE 7



PICTURE 8

### **FITTING INSTRUCTIONS**

- Undo and remove the two nuts arrowed in picture 1.
- Undo and remove the nut arrowed in picture 3.
- Remove the bolt arrowed in picture 2 and replace with the spanning spindle (item 5).
- Place the 32mm long spacers (item 4) over both sides of the spanning spindle as shown in pictures 5 and 6.
- Remove the two bolts labelled A and B in pictures 3 and 4.
- Place the two mounting blocks (items 3) over both sides of the spanning spindle as shown in pictures 5 and 6.
- Align both the mounting blocks with the frame holes and secure using the original nuts and bolts as shown in pictures 5 and 6.
- Place the two M8 washers (item 6) onto both sides of the spanning spindle.
- Place the two M8 nyloc nuts onto both sides of the spanning spindle and tighten (not above 20Nm) please ensure both nyloc nuts are fully engaged.

#### **LEFT HAND SIDE**

- Place one of the M10 washers onto the longest hex head bolt (item 10-110mm long).

### **R&G Racing**

Unit 1 Shelleys Lane, East Worldham, Alton, Hants GU34 3AQ

Tel: +44 (0)1420 89007 Fax: +44 (0)1420 87301 [www.rg-racing.com](http://www.rg-racing.com) Email: [info@rg-racing.com](mailto:info@rg-racing.com)



- Place one of the shake proof washers (item 8) onto the bolt against the plain washer.
- Place the bolt assembly through one of the crash protectors (item 1).
- Place the longer spacer (item 2-62mm long) over the exposed end of the bolt.
- Offer this assembly into position on the left hand side.
- Finally tighten the bolt until you feel some compression from inside the protector using a 17mm socket and wrench. **PLEASE NOTE THE CRASH PROTECTOR MUST BE POSITIONED AS IN PICTURE 'C' WITH BIGGER END TOWARD FRONT OF BIKE.** Turn a little more so that you feel the compression increase slightly. Then apply a quarter turn. Do not over tighten as damage can occur to the bike. Do not exceed 40Nm of torque.
- Fit the crash protector caps as shown in picture A.

#### **RIGHT HAND SIDE**

- Place the M10 washer onto the shortest hex head bolt (item 12-90mm long).
- Place the shake proof washer (item 8) onto the bolt against the plain washer.
- Place the bolt assembly through the remaining crash protector (item 1).
- Place the remaining spacer (item 13-36mm long) over the exposed end of the bolt.
- Offer this assembly into position on the right hand side.
- Finally tighten the bolt until you feel some compression from inside the protector using a 17mm socket and wrench. **PLEASE NOTE THE CRASH PROTECTOR MUST BE POSITIONED AS IN PICTURE 'C' WITH BIGGER END TOWARD FRONT OF BIKE.** Turn a little more so that you feel the compression increase slightly. Then apply a quarter turn. Do not over tighten as damage can occur to the bike. Do not exceed 40Nm of torque.
- Fit the crash protector caps as shown in picture B.

ISSUE 1 21/11/2012 (NSY)

#### **CONSUMER NOTICE**

The catalogue description and any exhibition of samples are only broad indications of the Products and R&G may make design changes which do not diminish their performance or visual appeal and supplying them in such state shall conform to the order. The Buyer acknowledges no representation or warranty (other than as to title) has been given or will apply to the Products other than those in R&G's order or confirmation and the Buyer confirms it has chosen the Products as being of merchantable quality and suitable for its particular purposes. Where R&G fits the Products or undertakes other services it shall exercise reasonable skill and care and rectify any fault free of charge unless the workmanship has been disturbed. The Buyer is responsible for ensuring that the warranty on the motorcycle is not affected by the fitting of the Products. On return of any defective Products R&G shall at its option either supply a replacement or refund the purchase money but shall not be liable if the Products have been modified or used or maintained otherwise than in accordance with R&G's or manufacturer's instructions and good engineering practice or if the defect arises from accident or neglect. Other than identified above and subject to R&G not limiting its liability for causing death and personal injury, it shall not be liable for indirect or consequential loss and otherwise its liability shall be limited to the amounts paid by the Buyer for the Products or the fitting or service concerned. These terms do not affect the Buyer's statutory rights.

#### **R&G RACING RETURNS POLICY (NON-FAULTY GOODS)**

Returns must be pre-authorized (if not pre-authorized the return will be rejected). Goods may only be returned direct to us if they were purchased direct from us (customer must prove if necessary). Otherwise to be returned to original vendor. Goods must be in re-sellable condition, in the opinion of R&G Racing. All returns are subject to a 25% restocking and handling fee (25% of the gross value exc. P&P – at the prevailing price at time of purchase). The customer must pay any and all carriage charges. No returns of discontinued products, unless within 14 days of purchase. This policy does not affect your statutory rights and does not refer to faulty goods.

### **R&G Racing**

Unit 1 Shelleys Lane, East Worldham, Alton, Hants GU34 3AQ

Tel: +44 (0)1420 89007 Fax: +44 (0)1420 87301 [www.rg-racing.com](http://www.rg-racing.com) Email: [info@rg-racing.com](mailto:info@rg-racing.com)



**Instructions de montage pour CP0323BL Protections Crash latérales**  
**HUSQVARNA 630 SMR 2010-11**

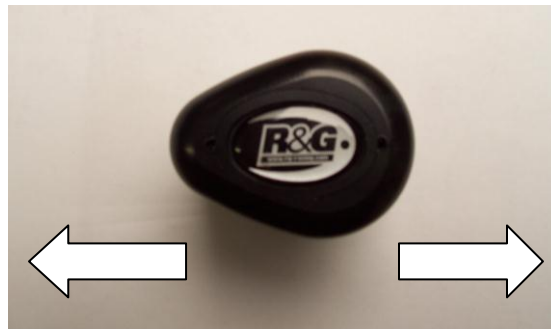
Page | 6



PHOTO 'A'



PHOTO 'B'



Arrière moto

Avant moto

PHOTO 'C'

**Le kit contient les articles exposés ci-dessous, vérifier que toutes les pièces soient présentes avant de procéder au montage.**

La façon dont le kit est emballé ne correspond pas forcément à la façon de monter les pièces sur la moto.

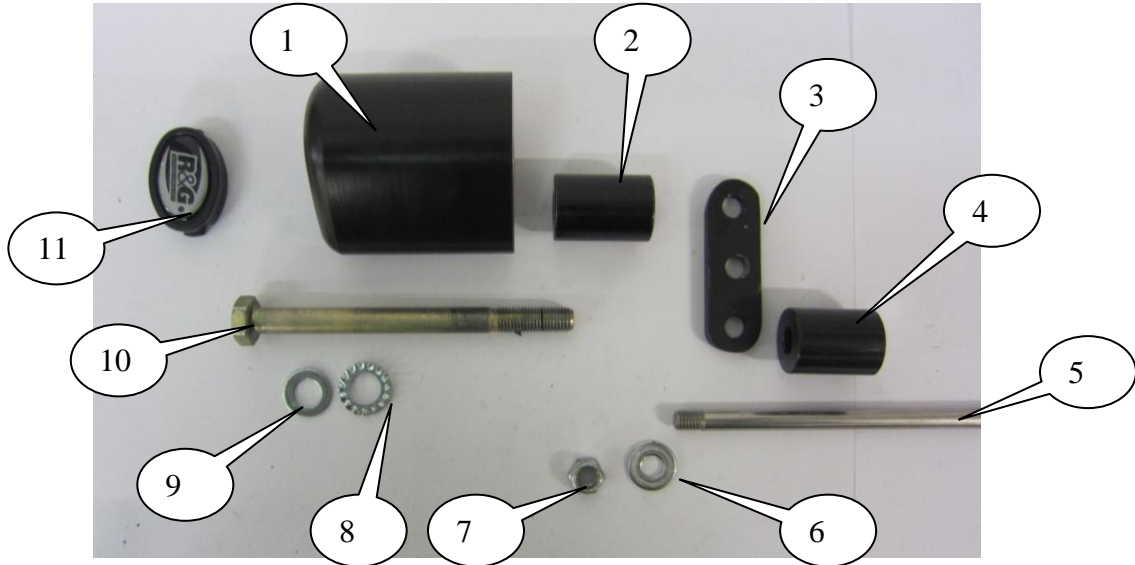
Notez que si les kits sont emballés avec des rondelles en caoutchouc servant à tenir les composants, *ces rondelles doivent être jetées.*

Les pièces présentées peuvent n'être que représentatives, afin de faciliter et clarifier les instructions de montage.

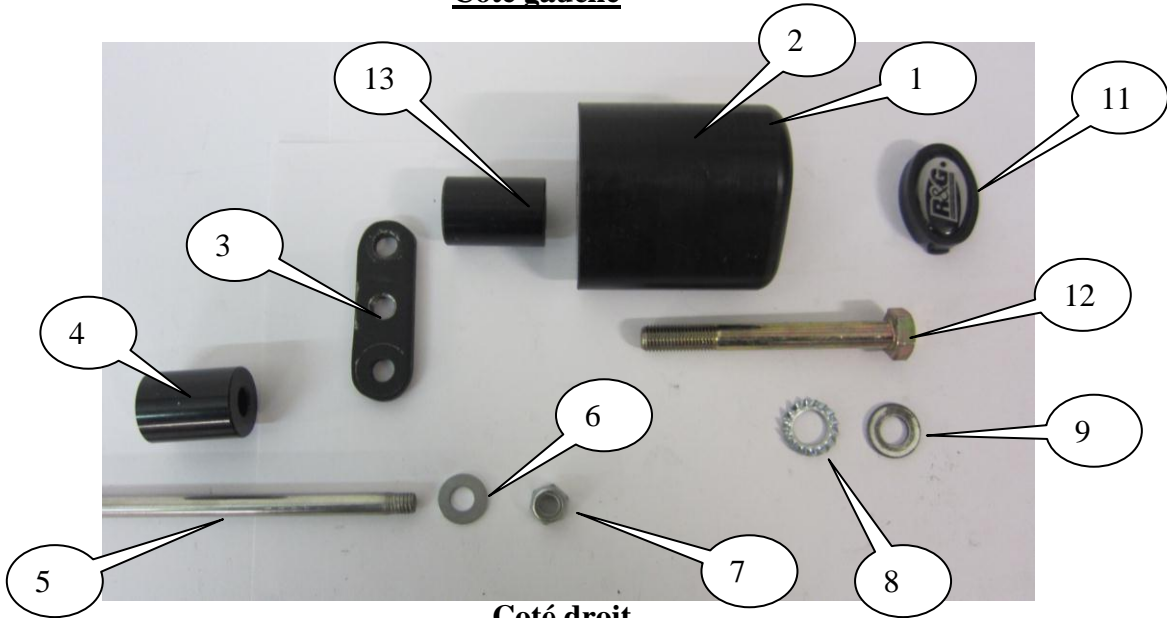
**R&G Racing**

Unit 1 Shelleys Lane, East Worldham, Alton, Hants GU34 3AQ

Tel: +44 (0)1420 89007 Fax: +44 (0)1420 87301 [www.rg-racing.com](http://www.rg-racing.com) Email: [info@rg-racing.com](mailto:info@rg-racing.com)



**Coté gauche**



**Coté droit**

**Outils requis**

- Clés 10, 12, 13(x2) et 17mm.
- Clé Dynamométrique à 40Nm.

**R&G Racing**



### **LEGENDE**

- ARTICLE 1 = B0061 avec CS0341 (10mm) (Les 2 protections Crash) (x2).  
ARTICLE 2 = S0571 62mm Longues entretoises coté gauche (Entretoise protection crash) (x1).  
ARTICLE 3 = M0330 Blocs de montage des 2 cotés. (x2).  
ARTICLE 4 = S0572 32mm Longue entretoise des 2 cotés (Entretoise broche) (x2).  
ARTICLE 5 = SB098 192mm Axe broche (Broche) (x1).  
ARTICLE 6 = M8 Rondelles plates (Broche) (x2).  
ARTICLE 7 = M8 Ecrous en Nyloc (x2).  
ARTICLE 8 = LW0001 (M12 Rondelles Shake proof) (x2).  
ARTICLE 9 = M10 Rondelles plates (Rondelles Protection crash) (x2).  
ARTICLE 10 = M10x1.25x110mm Long boulon à tête hexagonale (Protection crash coté gauche) (x1).  
ARTICLE 11 = BC0002 Capuchons protection crash (x2).  
ARTICLE 12 = M10x1.25x90mm Boulon à tête hexagonale (Protection crash coté droit) (x1).  
ARTICLE 13 = S0466 36mm Entretoise coté droit (Entretoise protection crash) (x1).

Page | 8

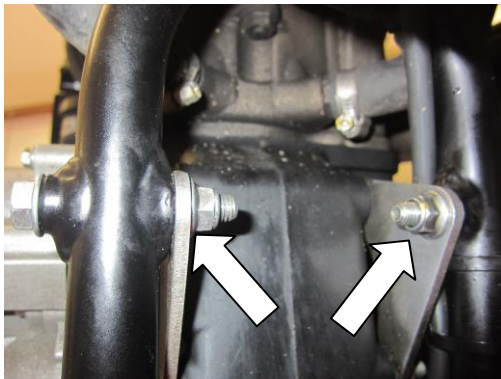


PHOTO 1

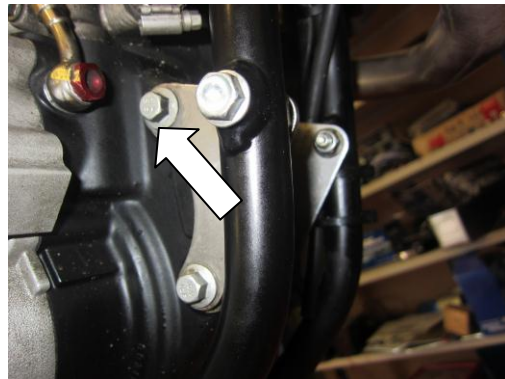


PHOTO 2

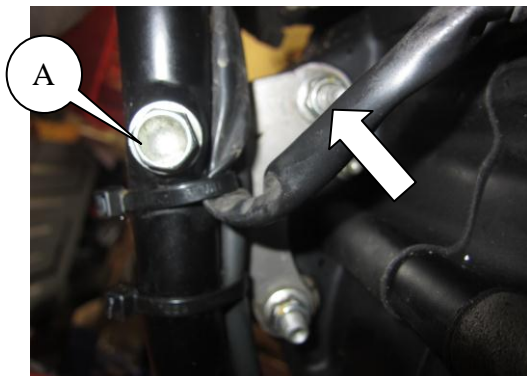


PHOTO 3

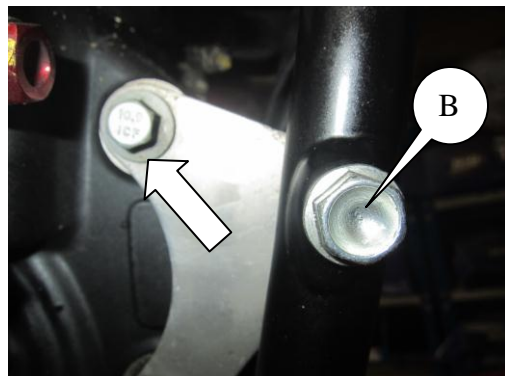


PHOTO 4

### **R&G Racing**

Unit 1 Shelleys Lane, East Worldham, Alton, Hants GU34 3AQ  
Tel: +44 (0)1420 89007 Fax: +44 (0)1420 87301 [www.rg-racing.com](http://www.rg-racing.com) Email: [info@rg-racing.com](mailto:info@rg-racing.com)





PHOTO 5



PHOTO 6

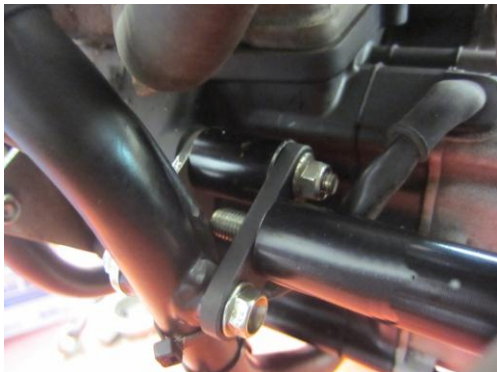


PHOTO 7



PHOTO 8

### **Instructions de montage**

- Enlever les 2 écrous (Photo 1).
- Enlever l'écrou (Photo 3).
- Enlever le boulon (Photo 2) puis remplacez-le par la broche (Article 5).
- Placer les entretoises de 32mm (Article 4) autour des 2 cotés de la broche (Photos 5 and 6).
- Enlever les 2 boulons (A et B) (Photos 3 et 4).
- Placer les 2 blocs de montage (Article 3) autour des 2 cotés de la broche (Photos 5 et 6).
- Aligner les 2 blocs de montage avec les trous dans le cadre puis bloquer les écrous d'origine et les boulons (Photos 5 et 6).
- Placer les 2 rondelles M8 (Article 6) sur les 2 cotés de la broche.
- Placer les 2 écrous en Nyloc M8 de la broche puis fixer (sans excéder 20Nm). Assurez vous que les 2 écrous en Nyloc soient complètement serrés.

### **Coté gauche**

- Placer une des rondelles M10 sur le plus long boulon à tête hexagonal (Article 10-110mm de long).

## **R&G Racing**

Unit 1 Shelleys Lane, East Worldham, Alton, Hants GU34 3AQ

Tel: +44 (0)1420 89007 Fax: +44 (0)1420 87301 [www.rg-racing.com](http://www.rg-racing.com) Email: [info@rg-racing.com](mailto:info@rg-racing.com)



- Placer une des rondelles "Shake proof" (Article 8) sur le boulon, contre la rondelle plate.
- Placer l'ensemble boulon/rondelles à travers l'une des protections crash (Article 1).
- Placer la plus longue entretoise (Article 2-62mm de long) autour de l'extrémité du boulon.
- Mettre cet ensemble en position du coté gauche.
- Bloquer les boulons jusqu'à ce que vous sentiez une compression grandissante depuis l'intérieur de la protection avec une clé 17mm.
- **NOTEZ QUE LA BOBINE DOIT ETRE POSITIONNEE COMME DANS "C" AVEC LA GROSSE EXTREMITE VERS L'AVANT DE LA MOTO.**
- Tourner un tout petit peu plus, pour augmenter légèrement la compression puis appliquer un quart de tour.
- Ne pas serrer trop non plus afin d'éviter que le serrage endommage la moto → PAS PLUS DE 40NM via la clé dynamométrique.
- Insérez les capuchons R&G (Photo A)

#### **Coté droit**

- Placer la rondelle M10 sur le boulon à tête hexagonale le plus court (Article 12-90mm de long).
- Placer la rondelle Shake proof (Article 8) sur le boulon contre la rondelle plate.
- Placer l'ensemble boulon/rondelles à travers la protection crash restante (Article 1).
- Placer l'entretoise restante (Article 13-36mm de long) autour de l'extrémité du boulon.
- Mettre cet ensemble du coté droit.
- **NOTEZ QUE LA BOBINE DOIT ETRE POSITIONNEE COMME DANS "C" AVEC LA GROSSE EXTREMITE VERS L'AVANT DE LA MOTO.**
- Tourner un tout petit peu plus, pour augmenter légèrement la compression puis appliquer un quart de tour.
- Ne pas serrer trop non plus afin d'éviter que le serrage endommage la moto → PAS PLUS DE 40NM via la clé dynamométrique.
- Insérez les capuchons R&G (Photo B)

ISSUE 1 21/11/2012 (NSY)

#### **CONSUMER NOTICE**

The catalogue description and any exhibition of samples are only broad indications of the Products and R&G may make design changes which do not diminish their performance or visual appeal and supplying them in such state shall conform to the order. The Buyer acknowledges no representation or warranty (other than as to title) has been given or will apply to the Products other than those in R&G's order or confirmation and the Buyer confirms it has chosen the Products as being of merchantable quality and suitable for its particular purposes. Where R&G fits the Products or undertakes other services it shall exercise reasonable skill and care and rectify any fault free of charge unless the workmanship has been disturbed. The Buyer is responsible for ensuring that the warranty on the motorcycle is not affected by the fitting of the Products. On return of any defective Products R&G shall at its option either supply a replacement or refund the purchase money but shall not be liable if the Products have been modified or used or maintained otherwise than in accordance with R&G's or manufacturer's instructions and good engineering practice or if the defect arises from accident or neglect. Other than identified above and subject to R&G not limiting its liability for causing death and personal injury, it shall not be liable for indirect or consequential loss and otherwise its liability shall be limited to the amounts paid by the Buyer for the Products or the fitting or service concerned. These terms do not affect the Buyer's statutory rights.

#### **R&G RACING RETURNS POLICY (NON-FAULTY GOODS)**

Returns must be pre-authorized (if not pre-authorized the return will be rejected). Goods may only be returned direct to us if they were purchased direct from us (customer must prove if necessary). Otherwise to be returned to original vendor. Goods must be in re-

#### **R&G Racing**

Unit 1 Shelleys Lane, East Worldham, Alton, Hants GU34 3AQ

Tel: +44 (0)1420 89007 Fax: +44 (0)1420 87301 [www.rg-racing.com](http://www.rg-racing.com) Email: [info@rg-racing.com](mailto:info@rg-racing.com)



sellable condition, in the opinion of R&G Racing. All returns are subject to a 25% restocking and handling fee (25% of the gross value exc. P&P – at the prevailing price at time of purchase). The customer must pay any and all carriage charges. No returns of discontinued products, unless within 14 days of purchase. This policy does not affect your statutory rights and does not refer to faulty goods.

**R&G Racing**

Unit 1 Shelleys Lane, East Worldham, Alton, Hants GU34 3AQ

Tel: +44 (0)1420 89007 Fax: +44 (0)1420 87301 [www.rg-racing.com](http://www.rg-racing.com) Email: [info@rg-racing.com](mailto:info@rg-racing.com)