



**FITTING INSTRUCTIONS FOR CP0418BL AERO CRASH PROTECTORS**  
**KAWASAKI Z900 2017-**



PICTURE 'A'



PICTURE 'B'



PICTURE 'C'

**THIS KIT CONTAINS THE ITEMS PICTURED AND LABELLED BELOW.**  
**DO NOT PROCEED UNTIL YOU ARE SURE ALL PARTS ARE PRESENT.**

Please note that the way the kit is packed does not necessarily represent the way of mounting to the bike

Please note that in cases where kits are packed with rubber washers holding the components onto the bolt – *the rubber washers should be thrown away!*

THE PARTS SHOWN MAY BE REPRESENTATIVE ONLY (FOR CLARITY OF INSTRUCTIONS ONLY)

**Digital copies of these instructions are available to download from [www.rg-racing.com](http://www.rg-racing.com)**

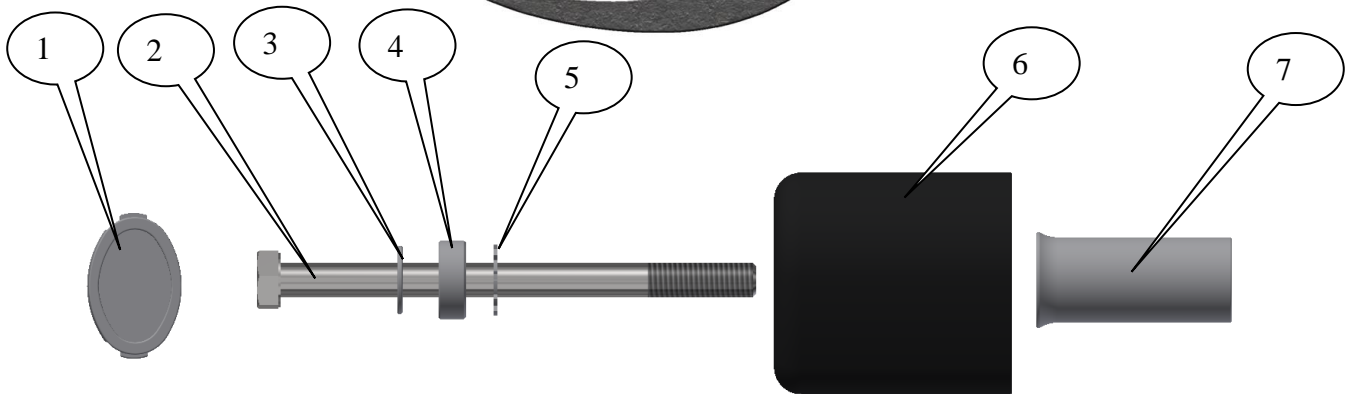
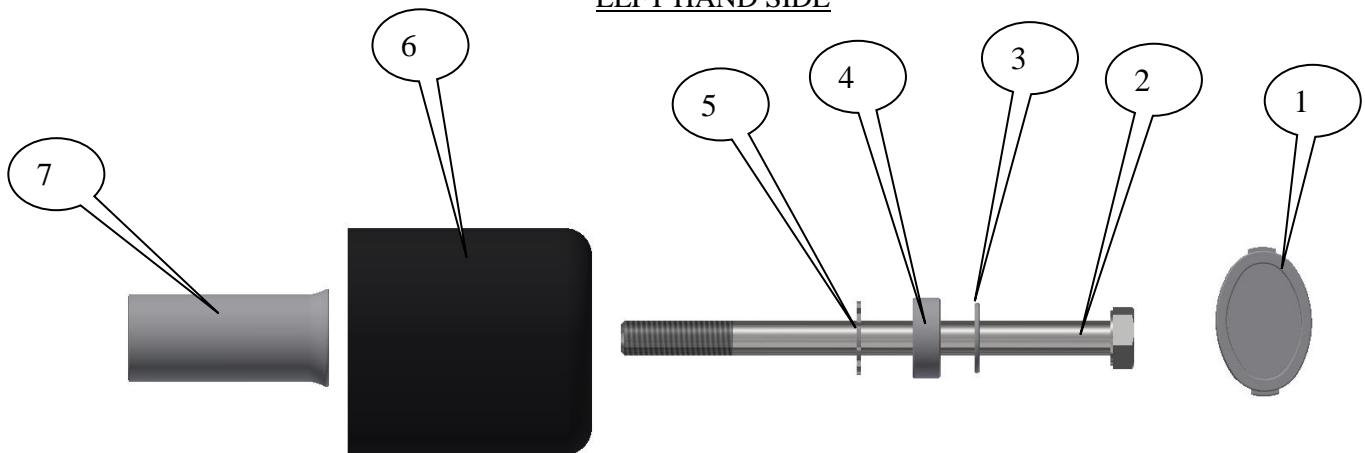
**GENERAL TORQUE SETTINGS**

M4 BOLT = 8Nm  
M5 BOLT = 12Nm  
M6 BOLT = 15Nm  
M8 BOLT = 20Nm  
M10 BOLT = 40Nm

**R&G Racing**

Unit 1 Shelleys Lane, East Worldham, Alton, Hants GU34 3AQ

Tel: +44 (0)1420 89007 Fax: +44 (0)1420 87301 [www.rg-racing.com](http://www.rg-racing.com) Email: [info@rg-racing.com](mailto:info@rg-racing.com)

LEFT HAND SIDERIGHT HAND SIDE**TOOLS REQUIRED**

- Socket set to include 14 and 17mm A/F socket and wrench.
- Torque wrench (up to 40Nm).

**LEGEND**

ITEM 1 = CRASH PROTECTOR CAPS, R&LHS (BC0002) (x2).

ITEM 2 = CRASH PROTECTOR BOLT R&LHS, M10x140mm LONG HEX HEAD (x1).

ITEM 3 = M10 PLAIN WASHERS, R&LHS (x2).

ITEM 4 = INSIDE THE CRASH PROTECTOR SPACER, R&LHS (S0293=5mm LONG) (x2).

ITEM 5 = LOCKING WASHERS, R&LHS (LW0001) (x2).

ITEM 6 = CRASH PROTECTORS, R&LHS (B0061 with CS341, 10mm) (x2).

ITEM 7 = CRASH PROTECTOR SPACER, R&LHS (S0388=57.5mm LONG) (x2).



PICTURE 1



PICTURE 2



PICTURE 3



PICTURE 4

### FITTING INSTRUCTIONS

#### *Near side (left side as you sit on bike)*

- Remove the bolt arrowed in pictures A and 1.
- Place one of the plain washers (item 3) over one of the hex headed bolt (item 2=140mm long) as shown in picture 2.
- Place one of the thinner/smaller spacers (item 4=5mm long) over the bolt and against the washer just fitted as shown in picture 2.
- Place one of the locking washers (item 5) over the bolt and against the spacer just fitted as shown in picture 2.
- Place the bolt with both washers and spacer through one of the crash protectors (item 6) as shown in picture 2.



- Place one of the longer/bigger spacers (item 7=57.5mm long) over the exposed end of the bolt with the larger diameter against the crash protector as shown in picture 2.
- Offer this assembly into position as shown in picture 'A' on page 1 (please ensure no parts come in contact with any fairing panels). Finally tighten the crash protector bolts until you feel some compression from inside the protector using 17mm socket and wrench. **PLEASE NOTE THE CRASH PROTECTOR MUST BE POSITIONED AS IN PICTURE 'C' WITH BIGGER END TOWARD FRONT OF BIKE.** Turn a little more so that you feel the compression increase slightly. Then apply a quarter turn. **Tighten to 40Nm of torque (do not exceed this figure, as damage can occur to the motorcycle and the bolt).**
- If not already fitted, fit bubble sticker into recess of crash protector cap (item 1).
- Fit crash protector cap (item 1) into the crash protector.

#### **Off side (right side as you sit on bike)**

- Remove the bolt arrowed in pictures B and 3.
- Place the remaining plain washer (item 3) over the remaining hex headed bolt (item 2=140mm long) as shown in picture 4.
- Place the remaining thinner/smaller spacer (item 4=5mm long) over the bolt and against the washer just fitted as shown in picture 4.
- Place the remaining locking washer (item 5) over the bolt and against the spacer just fitted as shown in picture 4.
- Place the bolt with both washers and spacer through the remaining crash protector (item 6) as shown in picture 4.
- Place the remaining longer/bigger spacer (item 7=57.5mm long) over the exposed end of the bolt with the larger diameter against the crash protector as shown in picture 4.
- Offer this assembly into position as shown in picture 'B' on page 1 (please ensure no parts come in contact with any fairing panels). Finally tighten the crash protector bolts until you feel some compression from inside the protector using 17mm socket and wrench. **PLEASE NOTE THE CRASH PROTECTOR MUST BE POSITIONED AS IN PICTURE 'C' WITH BIGGER END TOWARD FRONT OF BIKE.** Turn a little more so that you feel the compression increase slightly. Then apply a quarter turn. **Tighten to 40Nm of torque (do not exceed this figure, as damage can occur to the motorcycle and the bolt).**
- If not already fitted, fit bubble sticker into recess of crash protector cap (item 1).
- Fit crash protector cap (item 1) into the crash protector.

ISSUE 1 27/02/2017 (NSY)

#### **CONSUMER NOTICE**

The catalogue description and any exhibition of samples are only broad indications of the Products and R&G may make design changes which do not diminish their performance or visual appeal and supplying them in such state shall conform to the order. The Buyer acknowledges no representation or warranty (other than as to title) has been given or will apply to the Products other than those in R&G's order or confirmation and the Buyer confirms it has chosen the Products as being of merchantable quality and suitable for its particular purposes. Where R&G fits the Products or undertakes other services it shall exercise reasonable skill and care and rectify any fault free of charge unless the workmanship has been disturbed. The Buyer is responsible for ensuring that the warranty on the motorcycle is not affected by the fitting of the Products. On return of any defective Products R&G shall at its option either supply a replacement or refund the purchase money but shall not be liable if the Products have been modified or used or maintained otherwise than in accordance with R&G's or manufacturer's instructions and good engineering practice or if the defect arises from accident or neglect. Other than identified above and subject to R&G not limiting its liability for causing death and personal injury, it shall not be liable for indirect or consequential loss and otherwise its liability shall be limited to the amounts paid by the Buyer for the Products or the fitting or service concerned. These terms do not affect the Buyer's statutory rights.

#### **R&G Racing**

Unit 1 Shelleys Lane, East Worldham, Alton, Hants GU34 3AQ

Tel: +44 (0)1420 89007 Fax: +44 (0)1420 87301 [www.rg-racing.com](http://www.rg-racing.com) Email: [info@rg-racing.com](mailto:info@rg-racing.com)



**R&G RACING RETURNS POLICY (NON-FAULTY GOODS)**

Returns must be pre-authorized (if not pre-authorized the return will be rejected). Goods may only be returned direct to us if they were purchased direct from us (customer must prove if necessary). Otherwise to be returned to original vendor. Goods must be in re-sellable condition, in the opinion of R&G Racing. All returns are subject to a 25% restocking and handling fee (25% of the gross value exc. P&P – at the prevailing price at time of purchase). The customer must pay any and all carriage charges. No returns of discontinued products, unless within 14 days of purchase. This policy does not affect your statutory rights and does not refer to faulty goods.



**NOTICE DE MONTAGE POUR CP0418BL PROTECTIONS CRASH LATERALES**  
**KAWASAKI Z900 2017-**



PHOTO 'A'



PHOTO 'B'



PHOTO 'C'

**Le kit contient les articles exposés ci-dessous, vérifier que toutes les pièces soient présentes avant de procéder au montage.**

La façon dont le kit est emballé ne correspond pas forcément à la façon de monter les pièces sur la moto.

Notez que si les kits sont emballés avec des rondelles en caoutchouc servant à tenir les composants, *ces rondelles doivent être jetées!*

Les pièces présentées peuvent n'être que représentatives, afin de faciliter et clarifier les instructions de montage.

**Notice disponible au téléchargement sur [www.rg-racing.com](http://www.rg-racing.com)**

**COUPLES DE SERRAGE RECOMMANDES**

M4 BOULON = 8Nm

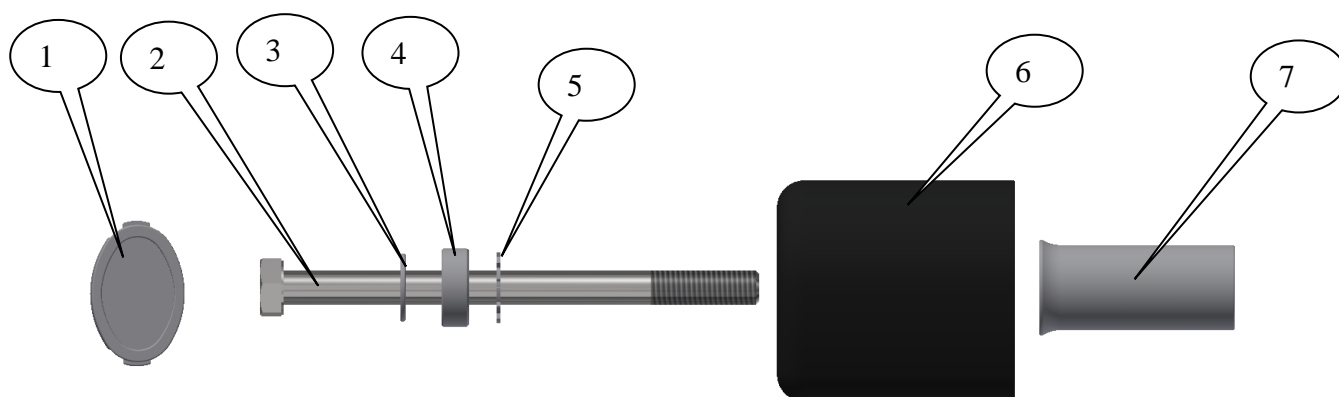
**R&G Racing**

Unit 1 Shelleys Lane, East Worldham, Alton, Hants GU34 3AQ

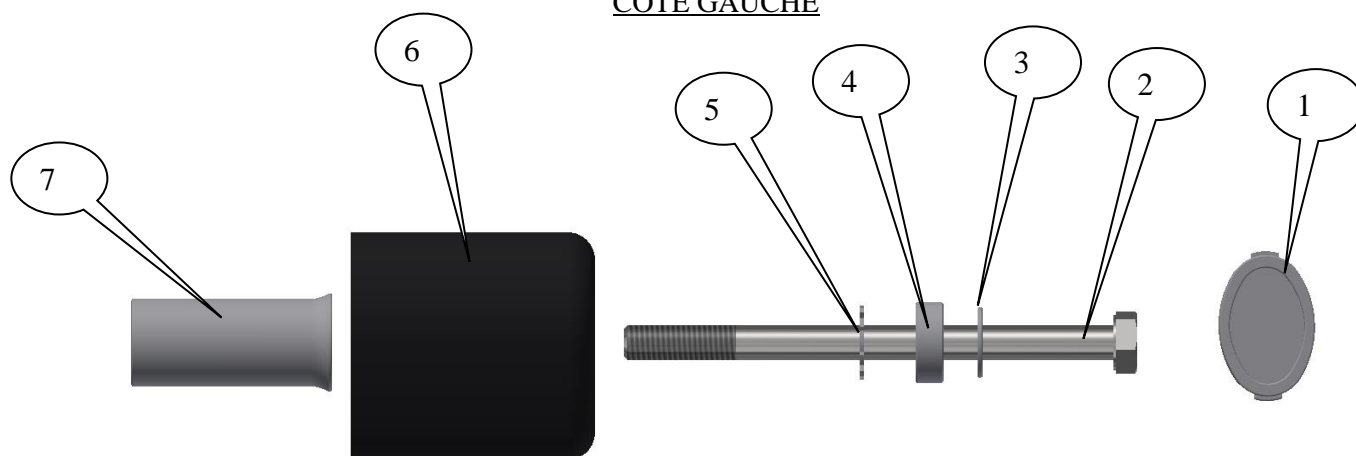
Tel: +44 (0)1420 89007 Fax: +44 (0)1420 87301 [www.rg-racing.com](http://www.rg-racing.com) Email: [info@rg-racing.com](mailto:info@rg-racing.com)



M5 BOULON = 12Nm  
 M6 BOULON = 15Nm  
 M8 BOULON = 20Nm  
 M10 BOULON = 40Nm



#### COTE GAUCHE



#### COTE DROIT

#### OUTILS REQUIS

- Clés à cliquets + douilles de 14 et 17mm..
- Clé dynamométrique (à 40Nm).

#### LEGENDE

ARTICLE 1 = CAPUCHONS DE PROTECTION, GAUCHE ET DROIT (BC0002) (x2).

ARTICLE 2 = BOULON DE PROTECTION CRASH, GAUCHE ET DROIT, M10x140mm (x1).

ARTICLE 3 = M10 RONDELLES COTE GAUCHE ET DROIT (x2).

ARTICLE 4 = ENTRETOISE INTERNE A LA PROTECTION CRASH, COTE GAUCHE ET DROIT (S0293=5mm DE LONG) (x2).

#### **R&G Racing**

Unit 1 Shelleys Lane, East Worldham, Alton, Hants GU34 3AQ

Tel: +44 (0)1420 89007 Fax: +44 (0)1420 87301 [www.rg-racing.com](http://www.rg-racing.com) Email: [info@rg-racing.com](mailto:info@rg-racing.com)



ARTICLE 5 = RONDELLES DE BLOCAGE, COTE GAUCHE ET DROIT (LW0001) (x2).

ARTICLE 6 = PROTECTIONS CRASH, COTE GAUCHE ET DROIT (B0061 avec CS341, 10mm) (x2).

ARTICLE 7 = ENTRETOISE DE PROTECTION CRASH, COTE GAUCHE ET DROIT (S0388=57.5mm DE LONG) (x2).



PHOTO 1



PHOTO 2



PHOTO 3



PHOTO 4

### NOTICE DE MONTAGE

#### ***Coté gauche lorsqu'on est assis sur la moto :***

- Enlever le boulon, indiqué sur la photo 1.
- Placer une des rondelles (article 3) sur le boulon le plus long (article 2=140mm long) comme indique que la photo 2.
- Placer une des plus petites rondelles (article 4=5mm de long) sur le boulon et contre la rondelle tout juste insérée, voir photo 2.





- Placer une des rondelles de blocage (article 5) sur le boulon et contre la rondelle tout juste insérée, voir photo 2.
- Placer le boulon avec les 2 rondelles dans une des protections crash (article 6), voir photo 2.
- Placer une des plus grosses rondelles (article 7=57.5mm long) sur l'extrémité du boulon, avec le plus gros diamètre contre la protection, voir photo 2.
- Monter l'ensemble en position, voir photo 'A' sur la page 1 (Veiller à ce qu'aucune partie ne puisse entrer en contact avec le carénage). Enfin, serrer les boulons de protection crash jusqu'à ce que vous sentiez la compression s'accroître dans la protection, en utilisant une clé à cliquet + douille de 17mm. **LA PROTECTION DOIT ETRE POSITIONNEE COMME EN "C" AVEC LE COTE ARRONDI LE PLUS GROS EN DIRECTION DE L'AVANT DE LA MOTO.** Tourner un peu plus afin d'accroître légèrement la compression. Faire un quart de tour. Serrer à 40Nm de couple (Ne pas dépasser cette valeur, car cela pourrait entraîner des dommages sur le boulon et la moto).
- Placer le sticker R&G dans le creux de capuchon de la protection (article 1).
- Insérer le capuchon de la protection (article 1) dans la protection.

**Coté droit lorsqu'on est assis sur la moto :**

- Enlever le boulon, voir photos B et 3.
- Placer la rondelle restante (article 3) sur le boulon restant (article 2=140mm de long) voir photo 4.
- Placer la petite entretoise restante (article 4=5mm long) sur le boulon et contre la rondelle tout juste insérée, voir photo 4.
- Placer la rondelle de blocage restante (article 5) sur le boulon et contre la rondelle tout juste insérée, voir photo 4.
- Placer le boulon avec les 2 rondelles et l'entretoise dans la protection crash restante (article 6) voir photo 4.
- Placer l'entretoise restante la plus grosse (article 7=57.5mm de long) sur l'extrémité du boulon avec le diamètre le plus large contre la protection crash, voir photo 4.
- Monter l'ensemble en position, voir photo 'B' sur la page 1 (Veiller à ce qu'aucune partie ne puisse entrer en contact avec le carénage). Enfin, serrer les boulons de protection crash jusqu'à ce que vous sentiez la compression s'accroître dans la protection, en utilisant une clé à cliquet + douille de 17mm. **LA PROTECTION DOIT ETRE POSITIONNEE COMME EN "C" AVEC LE COTE ARRONDI LE PLUS GROS EN DIRECTION DE L'AVANT DE LA MOTO.** Tourner un peu plus afin d'accroître légèrement la compression. Faire un quart de tour. Serrer à 40Nm de couple (Ne pas dépasser cette valeur, car cela pourrait entraîner des dommages sur le boulon et la moto).
- Placer le sticker R&G dans le creux de capuchon de la protection (article 1).
- Insérer le capuchon de la protection (article 1) dans la protection.

ISSUE 1 27/02/2017 (NSY)



#### **CONSUMER NOTICE**

The catalogue description and any exhibition of samples are only broad indications of the Products and R&G may make design changes which do not diminish their performance or visual appeal and supplying them in such state shall conform to the order. The Buyer acknowledges no representation or warranty (other than as to title) has been given or will apply to the Products other than those in R&G's order or confirmation and the Buyer confirms it has chosen the Products as being of merchantable quality and suitable for its particular purposes. Where R&G fits the Products or undertakes other services it shall exercise reasonable skill and care and rectify any fault free of charge unless the workmanship has been disturbed. The Buyer is responsible for ensuring that the warranty on the motorcycle is not affected by the fitting of the Products. On return of any defective Products R&G shall at its option either supply a replacement or refund the purchase money but shall not be liable if the Products have been modified or used or maintained otherwise than in accordance with R&G's or manufacturer's instructions and good engineering practice or if the defect arises from accident or neglect. Other than identified above and subject to R&G not limiting its liability for causing death and personal injury, it shall not be liable for indirect or consequential loss and otherwise its liability shall be limited to the amounts paid by the Buyer for the Products or the fitting or service concerned. These terms do not affect the Buyer's statutory rights.

#### **R&G RACING RETURNS POLICY (NON-FAULTY GOODS)**

Returns must be pre-authorized (if not pre-authorized the return will be rejected). Goods may only be returned direct to us if they were purchased direct from us (customer must prove if necessary). Otherwise to be returned to original vendor. Goods must be in re-sellable condition, in the opinion of R&G Racing. All returns are subject to a 25% restocking and handling fee (25% of the gross value exc. P&P – at the prevailing price at time of purchase). The customer must pay any and all carriage charges. No returns of discontinued products, unless within 14 days of purchase. This policy does not affect your statutory rights and does not refer to faulty goods.

#### **R&G Racing**

Unit 1 Shelleys Lane, East Worldham, Alton, Hants GU34 3AQ

Tel: +44 (0)1420 89007 Fax: +44 (0)1420 87301 [www.rg-racing.com](http://www.rg-racing.com) Email: [info@rg-racing.com](mailto:info@rg-racing.com)