



**ENJOY YOUR
RACE**



ONE ITALIAN PRODUCTION FOR ONE GLOBAL SUCCESS

CAPIT produces its professional tyre blankets since 1996 and thanks to the experience, research and test with the best world championship's teams (cars and motorcycles) has come to be one market leader.

This success comes from continuous evolution of products for which our company often has been innovative, introducing new concepts (heat circuit with radial layout, elimination of mechanical thermostats by TNT system), new materials (fireproof and heat spreader fabrics) and new technologies (electronic temperature management).

Differently from many others competitors, CAPIT produces in its Italian headquarters and directly manages the study, the development and the implementation of every single product's part: textile, electric and electronic. Chosen materials, the technologies used and the production methods are excellent and therefore guarantee best performance and reliability.

Today our products are sold in many countries in the world: one "made in Italy" production for one "world wide" success.

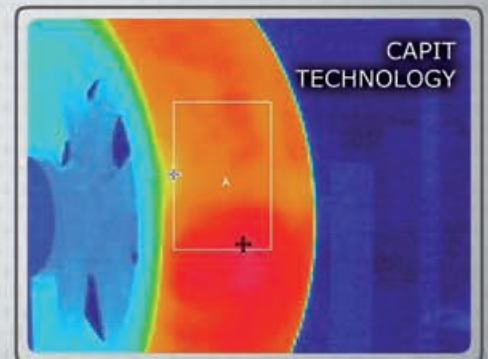
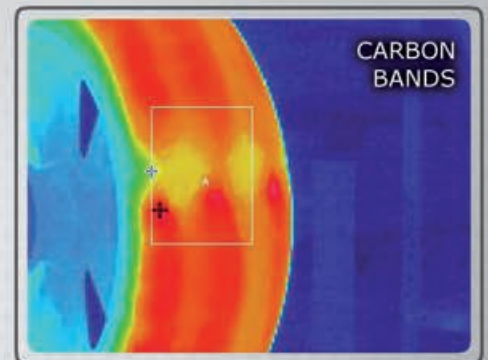
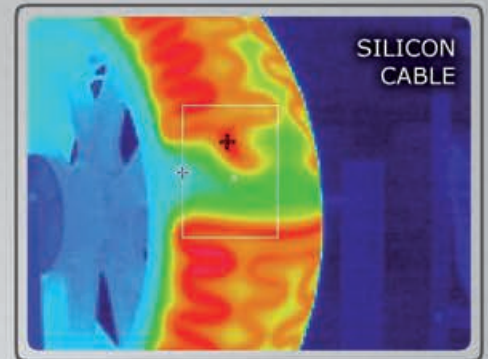
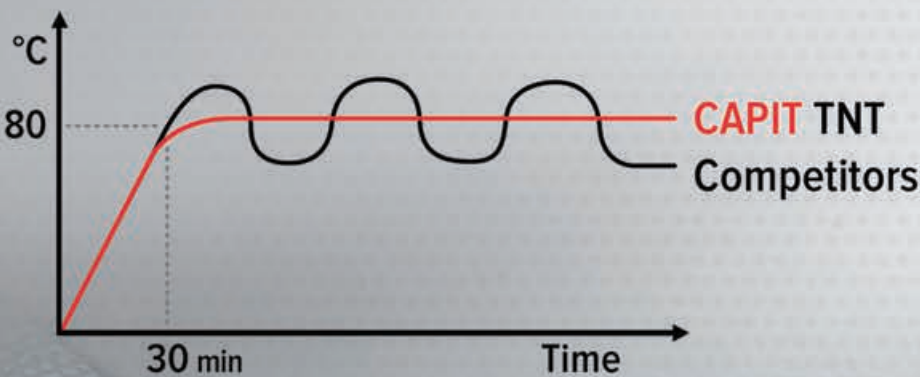


CE 3 YEARS
WARRANTY
100% MADE
IN ITALY

CAPIT formula: DEVELOPMENT + EVOLUTION = INNOVATION

CAPIT during these years has continuously developed its products. By a strict attention we have improved the most critical areas and we have explored new branch to push our limits and our products to the top. The development of materials and manufacturing techniques, with the important evolution of electronics both, has made us innovative. Among the many technical issues we can mention the most important ones:

- **Technology "TNT" self regulated** that does not require the use of traditional thermostat. This allows one durable thermal stability at 85°C that no mechanical thermostat is able to guarantee. The absence of a critical component as the thermostat increases significantly the reliability of our product.
- **DIGITAL management** of temperatures for the highest accuracy and stability by the PID technology. We are one of the few companies able to offer the management of tyre blankets and their temperatures by one **touch-screen control box** that provides greater performance and offers the possibility to have charts and diagrams of the system.
- **HEAT spreader** (internal fabric and highly conductive) able to diffuse perfectly the heat and to reduce drastically power consumption thanks to the improved overall thermal efficiency.





SUPPLIER OF:



CHOOSE YOUR PRODUCT AND YOUR TEMPERATURE (from 20°C to 150°C)

CAPIT produces cars tyre blankets with excellent technical and aesthetic quality. Our products are used in best championships, including Formula 1, as well as by official cars and tyre manufacturers for their test team.

Our products are available for all tyre sizes and are available in **SPINA version** (with technology "TNT" self-regulated at 85°C) with 100V or 230V plugs, or in the more professional **LEO version** where you can, using our thermo ecu LEO, choose the desired temperature into a range between 20°C up to 150°C. All tyre blankets are supplied complete with pocket for notes and identification patch (Front left / right and Rear left / right).

Models GT/PROTOTYPE/F1 have colored identifying stripes as standard equipment but you can also request them on other models. It's possible, through personalization and accessories, have a professional product "tailored" (product warranty of 2 years).





SIDE COVER

Product made to ensure the temperature stability on every difficult weather conditions such as cold, strong wind or rain. Have to be used over the tyre blankets and not as alternative to them. They are used with the four tyre blankets mounted on the car and like one "hat" when four tires are stored one above the others. Available with team LOGO (read dedicated notes on page 07).



SUPPLIER OF:





SUPPLIER OF:



TYRE BLANKETS

Our tyre blankets are available in **SPINA Version** with direct plug (100V/230VAC) and 85°C fixed temperature or in **LEO Version** with connectors for LEO ecu thermocontroller to adjust-set temperature from 20°C to 150°C.

Code	Description	Tyre's Width		Tyre's Circumference		Note
		Front	Rear	Front	Rear	
TWK	Set tyre blankets for size Kart	130mm	210mm	880mm	910mm	Only SPINA version
TWA1_	Set tyre blankets for car size Formula	180/250mm	240/300mm	1670/1800mm	1770/1850mm	
TWA2_	Set tyre blankets for car size Touring/rally	200/270mm	200/270mm	1920/2020mm	1920/2020mm	
TWA3_	Set tyre blankets for car size DTM/Superstars	280/305mm	280/305mm	2050/2100mm	2050/2100mm	
TWA4_	Set tyre blankets for car size GT	235/285mm	285/330mm	2070/2100mm	2130/2230mm	Identification bands included
TWA5_	Set tyre blankets for car size Prototype	340/400mm	370/440mm	2100/2150mm	2170/2250mm	Identification bands included
TWF1L	Set tyre blankets for car size Formula one	250mm	320mm	>=2045mm	>=2054mm	Only in LEO version Identification bands & Heat spreader included



EXTRA CUSTOMIZING OPTIONS

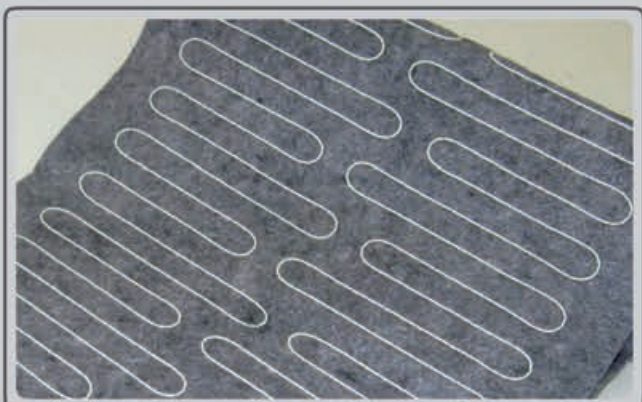
CAPIT offers a range of optional dedicated to its tyre blankets right to customize them as you want: without unnecessary characteristics and with the specific requested details.



You can choose the exterior color between **6 classic colors** (*): Black, Red, Blue, Green, Yellow and Orange | (*) For free option



You can choose one of the **special colors** such as: Carbon look and **special series** like the famous "Stars 'n Stripes" or "Forest" version



High technology **Heat spreader** to increase global performances is optional (standard on F1 model only)



You can have, on request, **identification bands** [Front left-right / Rear left-right] in different colors (standard on GT/Prototype/F1 models)



You can require the application of the **Team Logo** or your personal one (we need vector file format .ai or .eps)



You can require the application of **crystal pocket** to insert notes techniques such as the characteristics of the tyre/compound



TECHNICAL PARTNER:



CHOOSE YOUR PRODUCT AND YOUR TEMPERATURE (from 20° to 120°C)

Tyre warmer for motorcycles is the heart of CAPIT because it was the product with which the company debuted in the motorcycle market.

Our models are a market reference and many professional teams rely on our experience and quality.

Our products are available for all tyre sizes and are available in **SPINA version** (powered by "TNT" auto regulated at 85°C) with a plug is 100V to 230V, or in the more professional **versions LEO and VISION** where you can set and control the temperature in a range between 20°C up to 120°C. All the products have 3 years of warranty.



NEW **FACTORY** SERIES TECHNICAL FEATURES

Capit Performance proudly introduces the new "**FACTORY**" series for **LEO** and **VISION** models that allow everybody to experience the same performance level of MotoGP top riders.

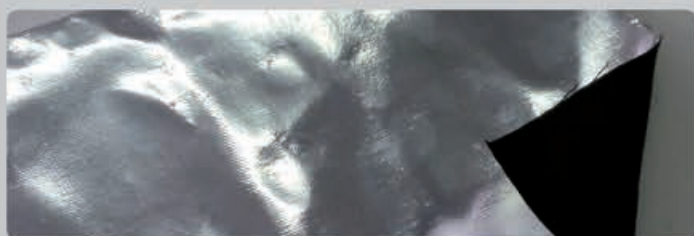
Hereby the technical feature and improvement compared with the other our professional tyre warmer series:

Size	Description	Tyre measures		Note
		Front	Rear	
S / M	Set Moto3 / (125gp)	90/17"	120/16-17"	FACTORY
M / L	Set Supersmoto / (250GP)	120/17"	<=180/16-17"	FACTORY
M / XL	Set SBK / SS / Moto2	120/17"	<=205/16-17"	FACTORY
M / XXL	Set MotoGP (rear-post. 205/215)	120/17"	>= 205"	FACTORY
Unsize	Set VENTOSTOP (front-rear)			FACTORY



BIGGER HEATING SURFACE

Thanks to a larger heating circuit width (+1,5 cm for both front and rear), the total amount of heating surface for the "**FACTORY**" has been increase of 9% for "M" and 6% for "XL" to grant the top heating performance also on the edge of the tyre.

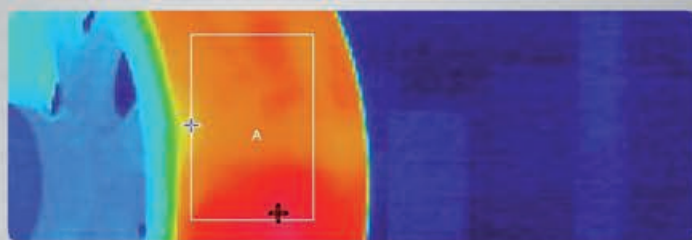


HEAT SPREADER TECHNOLOGY

The special layer between heating cable and tread surface is included into the new Capit "**FACTORY**" series (it is an optional for our others tyre warmer series). This exclusive tissue grant a perfect heating spreading avoid any kind of hot spots or temperature peaks, increasing the compound performance and durability.

TECHNICAL DATA:

Input Voltage: 100-110-220-240 VAC | Front power consumption at start: 400W | Rear power consumption at start: 700W
"FACTORY" series are 100% compatible with all our heating management systems as: LEO2/4 | MAMMUTH EVO | GRID CADDY EVO



NEW HEATING CIRCUIT DESIGN

The "**FACTORY**" heating circuit layout is different from all others on the market. It fix the heating cable in the centre of the tread as well as on the side for a perfect diffusion of the heat. The distance between heating lines is now further decreased to just 13 mm: there's no warmer in the world with so much heating cable inside as Capit "**FACTORY**" so, of course, there no better surface covering!



CRYSTAL POCKET

An exclusive feature directly from MotoGP top teams: write down all your tyre details and place them into this pocket. No more disorderly and dirty sticker onto your warmers!



NEW LINE

SUPREMA

TYREWARMERS | SIZES AND COLORS RANGE

Size	Description	Tyre measures	
		Front	Rear
Unsize	Set Pocket bike - Mini Moto	90/110	90/110
Unsize	Set Scooter 10"	90 / 90-10" (3,5)	90 / 90-10" (3,5)
Unsize	Set Scooter - Pit Bike 12"	100 / 90-12"	120 / 80-12"
Unsize	Set Classic 18"	<110-18"	<=130-18"
S / M	Set Moto3 / (125gp)	90/17"	120/16-17"
M / L	Set Supermoto / (250GP)	120/17"	<=180/16-17"
M / XL	Set SBK / SS / Moto2	120/17"	<=205/16-17"



YELLOW



ORANGE



RED



GREEN



BLUE



CAMOUFLAGE



BLACK



CARBON

**TYREWARMERS TYPE SUPREMA SPINA
TNT system at 85°C with standard plug**

It has simple shape but great contents. This model has been designed to offer one practical product that still maintains the efficiency required to use both amateur as well as professional. The quality-price balance is one of the best in the world because in addition to having professional performance for a standard price, reliability and durability over the years are close to the top. The SUPREMA is made with the innovative and exclusive **"TNT" self-adjusting technology**, without thermostat (read dedicated article on page 03) and it is available in various different sizes (from MINIMOTO to the MOTOGP). 8 colors available, they can be customized with various accessories in our catalogue as the Heat Spreader, team logos, data pocket, etc. Available with EU, UK, AUS and JP standard plugs.

Side sizes larger than old SPORT model.

TYREWARMERS TYPE SUPREMA DUCATI TNT system at 85°C with standard plug

It has all details that the technicians of best team require and appreciate because they are very important. SUPREMA SPINA version is equipped with our **exclusive "TNT" self-adjusting technology** (read dedicated article on page 03), which ensures thermal stability of 85 °C that any thermostat will never be able to match. Special version with dedicated outer fabric more heat/fire resistant than standard ones (available only in black colour). Available with EU, UK, AUS and JP standard plugs.

SUPREMA DUCATI is available also in LEO and VISION version.



TYREWARMERS TYPE SUPREMA LEO from 20°C to 120°C

It is the excellence. The SUPREMA **LEO version** is designed to work through our electronic control units.

By one dedicated connector this tyrewarmer is compatible with our controllers **LEO2 and LEO4**, with racks **MAMMUT EVO** and carries **GRID CADDY EVO**. Through these articles you can view, choose and set the operating temperature of the tyrewarmers. In the standard version the temperature range is 20°C/120°C. 8 colors available, they can be customized with various accessories in our catalogue as the Heat Spreader, team logos, data pocket, etc. Made with circuit for 100V or 230V.

TYREWARMERS TYPE SUPREMA VISION from 20°C to 120°C with standard plug

It is the excellence. The **VISION type** is equipped with one control unit of ultra-compact size (8mm. thickness) integrated directly into the tyrewarmer. This console allows you to view the chosen temperature (T-set) and the current temperature (T-run). It also keeps the part-time (Last time) and the life time (Total time). 8 colors available, they can be customized with various accessories in our catalogue as the Heat Spreader, team logos, data pocket, etc. Available with EU, UK, AUS and JP standard plugs.





TECHNICAL PARTNER:

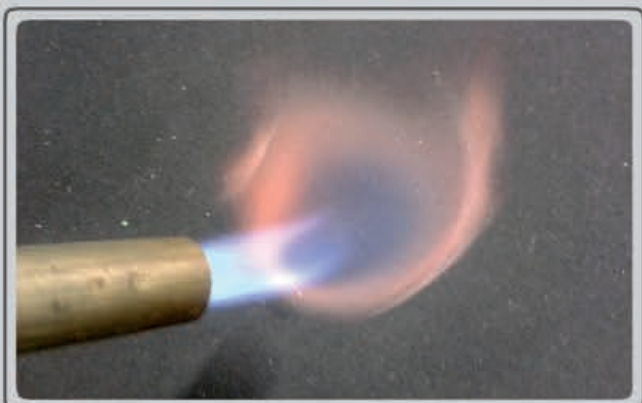


EXTRA CUSTOMIZING OPTIONS

CAPIT offers a range of optional dedicated to its tyrewarmers right to customize them as you want: without unnecessary characteristics and with the specific requested details.



You can choose the exterior color between **6 classic colors** (*): Black, Red, Blue, Green, Yellow and Orange | (*) For free option



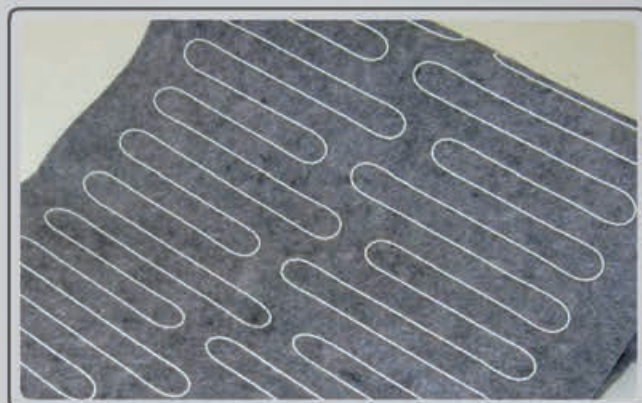
Outer preox **fire-proof** tissue (black colour only) to avoid damage with very hot motorcycle parts (Ex: exhaust collectors)



You can require the application of **crystal pocket** to insert notes techniques such as the characteristics of the tyre/compound (standard for "FACTORY" model only)



You can choose one of the **special colors** such as: Carbon look and **special series** like the famous "Stars 'n Stripes" and "Forest" version



High technology **Heat spreader** to increase global performances is optional (standard for "FACTORY" model only)



You can require the application of the **Team Logo** or your personal one (standard for "FACTORY" model only | we need vector file format .ai or .eps)

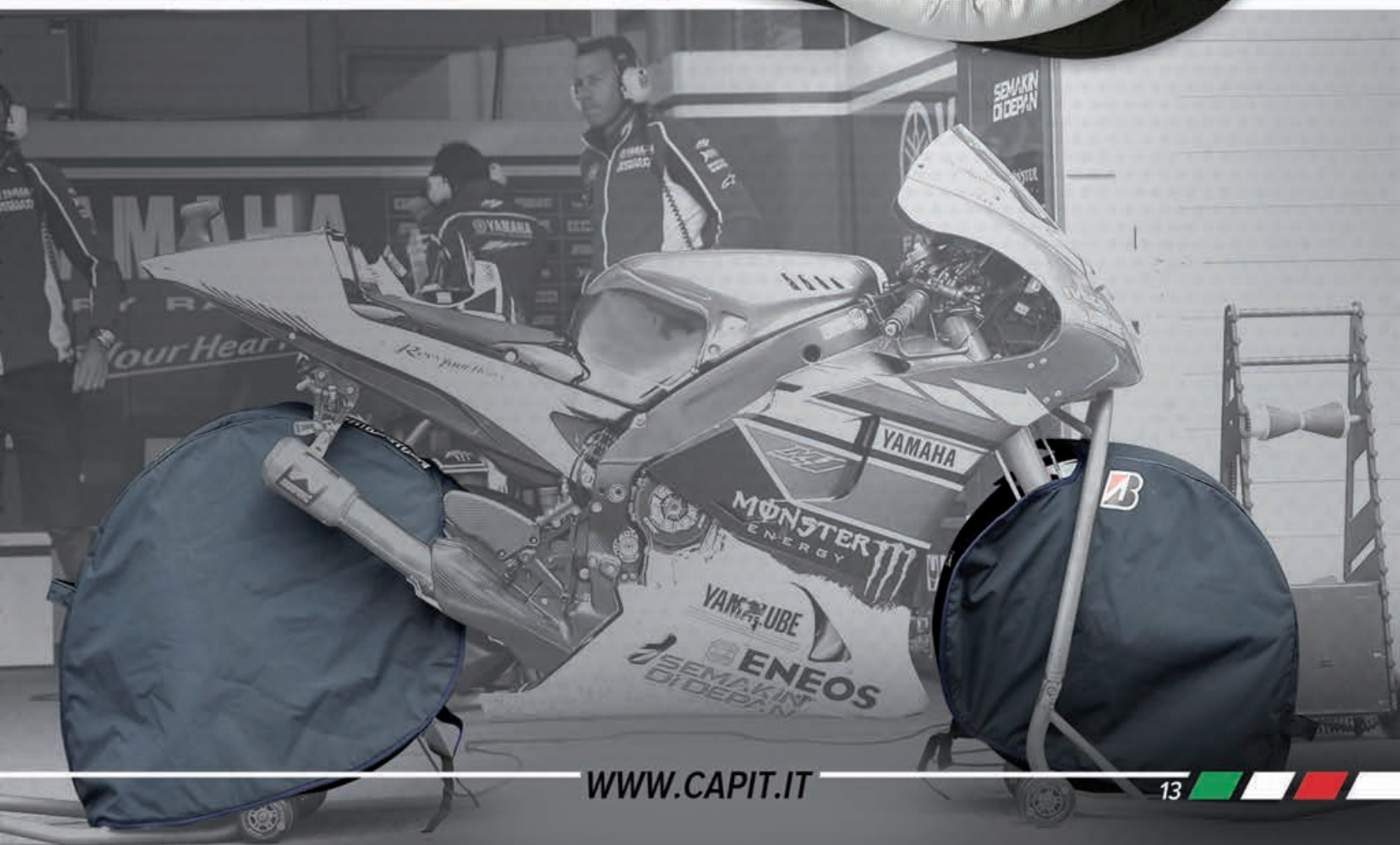
TECHNICAL PARTNER:



capit[®]

VENTOSTOP

Made to ensure the temperature stability in difficult weather conditions such as cold, strong wind or rain, also in contact with hot mechanical parts as brake disc or exhaust collector, they must be mounted over the warmer and not as alternative of them. Available also with Fire-Proof fabric outside (only in black colour) and/or with team LOGO (read dedicated notes on page 12).





TECHNICAL PARTNER:



ECU CONTROL BOX "LEO"

LEO2

ECU to control/manage temperatures of 2 tyrewarmers (1 bike). Compact size and durable frame to have high reliability and avoid obstructions. The displays are hardy and easy to read even in particular light situations. Simple to use, you can set 4 different temperature settings and recall them with a single key ("jump" function very useful during practice or test moment). The unit is supplied with 2 cables 3mt long with connectors for MAXIMA LEO tyrewarmers. In damage case, thanks to our range of spare parts, we offer qualified repair service.

LEO4

ECU to control/manage temperatures of 4 tyrewarmers (2 bike / 1 car). Compact size and durable frame to have high reliability and avoid obstructions. The displays are hardy and easy to read even in particular light situations. Simple to use, you can set 4 different temperature settings and recall them with a single key ("jump" function very useful during practice or test moment). The unit is supplied with 4 cables 3mt long with connectors for MAXIMA LEO tyrewarmers. In damage case, thanks to our range of spare parts, we offer qualified repair service.



LEO4 TIMER

ECU to control/manage temperatures of 4 tyrewarmers (2 bike / 1 car). Compact size and durable frame to have high reliability and avoid obstructions. The displays are hardy and easy to read even in particular light situations. Simple to use, you can set 4 different temperature settings and recall them with a single key ("jump" function very useful during practice or test moment). The TIMER model is equipped with one display able to control the operation timing of linked tyrewarmers and it is characterized by its lightweight carbon fiber frame. The unit is supplied with 4 cables 3mt long with connectors for MAXIMA LEO tyrewarmers. In damage case, thanks to our range of spare parts, we offer qualified repair service.

LEO TOUCH

ECU of the latest generation with high potential. It is able to control the temperature of 4 tyrewarmers (2 motorcycles / 1 car) and also handle different temperatures for single warmer with multiple heating circuits (centre and sidewall of each car tyre). The performances are the top thanks to the PID technology which ensures the maximum stability of the set temperature even further to 150°C. The software includes 12 hours of "data recording" and its graphical representation directly on the LCD display. With its advanced hardware and its carbon fiber case, the weight is less than 2 kg. The unit is supplied with 4 cables 3mt long with connectors for MAXIMA LEO tyrewarmers. In damage case, thanks to our range of spare parts, we offer qualified repair service.

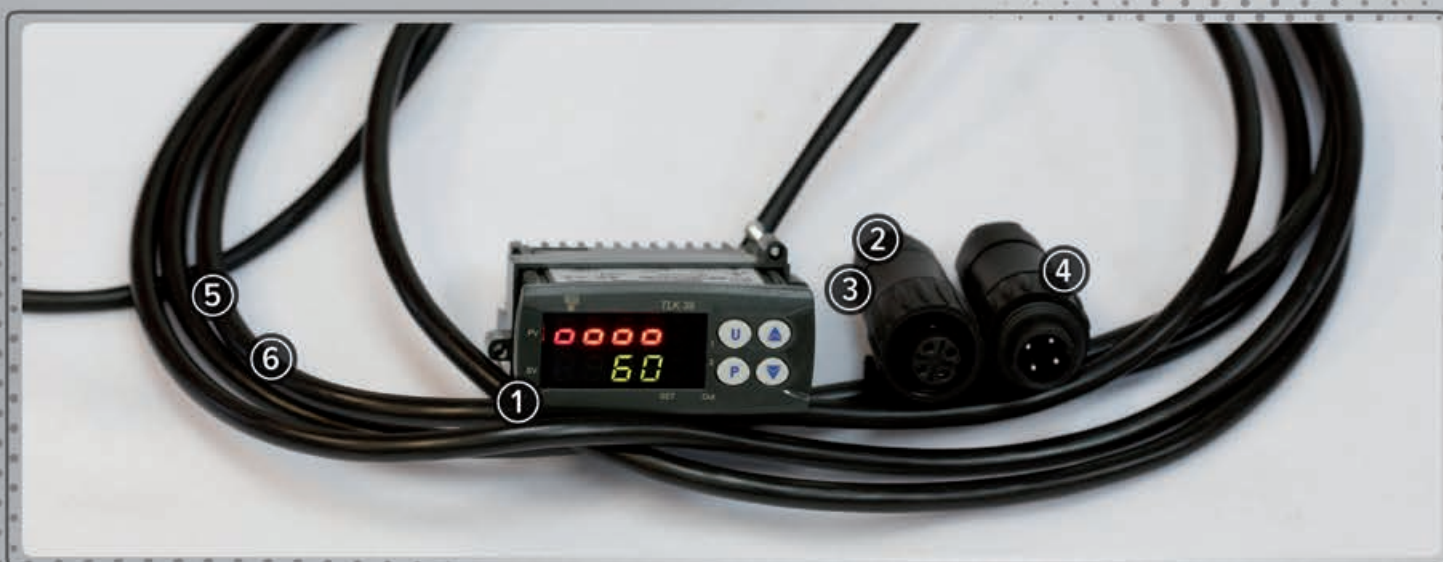


SPARE PARTS

CAPIT is one manufacturer so is able to ensure the care and maintenance of their products, moreover it offers all accessories and spare parts required to do it.

Our company is able to assist its clients not only on the textile side but also on the electrical and electronics areas.

Our customers can request the creation of customized structures based on their design or they can change their existing furnishing autonomy, buying our accessories and spare parts in the catalog.



- | | |
|------------------------------------------------------------------------------------------------------------------------------------------------------------------------------------------------------------------------------------------------------------------------------------------------------|------------------------------------------------------------------------------------------------------------------------------------------------------------------------------------------------------------------------------------------------------------------------------------------------------------------------------------------------------|
| <p>① WER023
Single DGT display for ECU LEO2 / LEO4 and MAMMUTH EVO types</p> <p>② WEC101
FEMALE CONNECTOR for MAMMUT EVO types</p> <p>③ WEC102
FEMALE CONNECTOR for ECU LEO2 / LEO4 cables</p> <p>④ WEC103
MALE CONNECTOR for MAXIMA LEO tyrewarmers</p> | <p>⑤ WEC109
CABLE 3mt for ECU LEO2/LEO4 with female connector only</p> <p>⑥ WEC111
CABLE 5mt for ECU LEO2 / LEO4 with female connector only</p> <p>EXTRA cable 3mt for ECU LEO2 / LEO4 and MAMMUT EVO with male and female connectors</p> <p>EXTRA cable 5mt for LEO2/LEO4 and MAMMUTH EVO with male and female connectors</p> |
|------------------------------------------------------------------------------------------------------------------------------------------------------------------------------------------------------------------------------------------------------------------------------------------------------|------------------------------------------------------------------------------------------------------------------------------------------------------------------------------------------------------------------------------------------------------------------------------------------------------------------------------------------------------|





TECHNICAL PARTNER:



THE "SUIT DRYER"

CAPIT is happy to introduce the new SUIT DRYER that joins to the already know product: the DRY HELMET.

As can be understood from the article's name, it born to dry the motorcycle rider leather suits and/or car driver textile suits (but it can be used for different clothing).

Even this product offers the double option hot/cold air, so it can dry one suite in very short time (impossible with cold air only), and one excellent ventilation flow.

This article is made with ABS shell and aluminum components so it is resistant and light in same time.

SUIT DRYER is designed to optimize performance and use in all conditions and it has been tested with some of the best riders in the World Championships to improve comfort and avoid any problems risks top the suit.

This products combines the beautiful appearance and excellent performance typical of the "Made in Italy" but without high price.



TECHNICAL PARTNER:



capit[®]

THE "DRY HELMET"

This item has been designed to solve really and effectively one of the most annoying problems for riders: dry the helmet.

In cold seasons, but even when the heat is very humid, the sweat of the helmet does not dry out, thus creating problems of comfort, fogging of the visor or worse, sweat drops into the eyes.

With the function "hot air" the DRY HELMET is able to dry the inside of the helmet in a few minutes and without leaving annoying scent (the "cold air" keeps the helmet ventilated and cool).

The product is designed to dry the helmet without changing its security elements (inside and padding).
Available both for 230V and 100/110V.



**NEW
CHROME
OPTION**



**ALSO SUITABLE FOR
MOTOCROSS**

WWW.CAPIT.IT





TECHNICAL PARTNER:



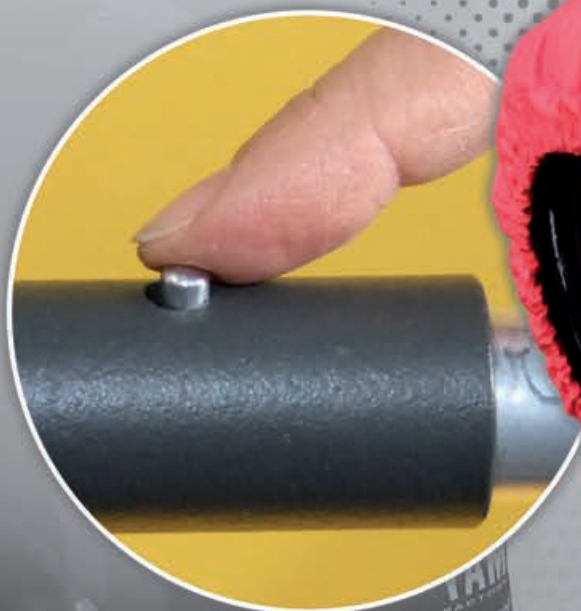
“TOTEM 4”:

**One professional
products studied for
private riders too**

CAPIT has developed a new product with all the professional features but also designed to be useful for private riders too.

Here one motorcycle wheels stand, strong and able to hold 2 sets, easily assembled and disassembled, light and practical.

The closure system and material (aluminum) permits to transport and move it easily in narrow spaces.



RIMS-WHEELS RACK "MAMMUTH" (SPINA or LEO)

CAPIT designed this product for race activities of teams who use tyrewarmers. This product grants the best housing of rims and the best tyre management of heating process and heat retention. They are made in aluminum and are divisible just to be light and occupy minimum volume during transport.

Strong and reliable, they have great advantage to have all electric wires and electronic (LEO) integrated, making them invisible, right to reduce annoying and dangerous hitch in the box during the frenetic activity of the mechanics.

The product is supplied with pivots wheel included.

- ① The Mammut **SPINA version** is equipped with electrical outlet type CE standard (UK, AUS, USA, JAP types available on request) to power our tyrewarmers SUPREMA SPINA and SUPREMA VISION.
- ② The Mammut **LEO version** is dedicated to our tyrewarmers SUPREMA/FACTORY LEO and it integrates the electronics and the components of our ECU LEO2/LEO4. Practicality, efficiency and savings in a single product.

MAMMUT DIMENSIONS TAB

Aluminium rims-wheel rack

	A	B	C	Kg
Mammut 4 LEO/SPINA **	870mm	1320mm	540mm	8
Mammut 8 LEO/SPINA *	1290mm	1320mm	540mm	16
Mammut 10 LEO/SPINA *	1600mm	1320mm	540mm	20
Mammut 12 LEO/SPINA *	1910mm	1320mm	540mm	24
Mammut 12 Moto3 LEO/SPINA *	1600mm	1320mm	540mm	20

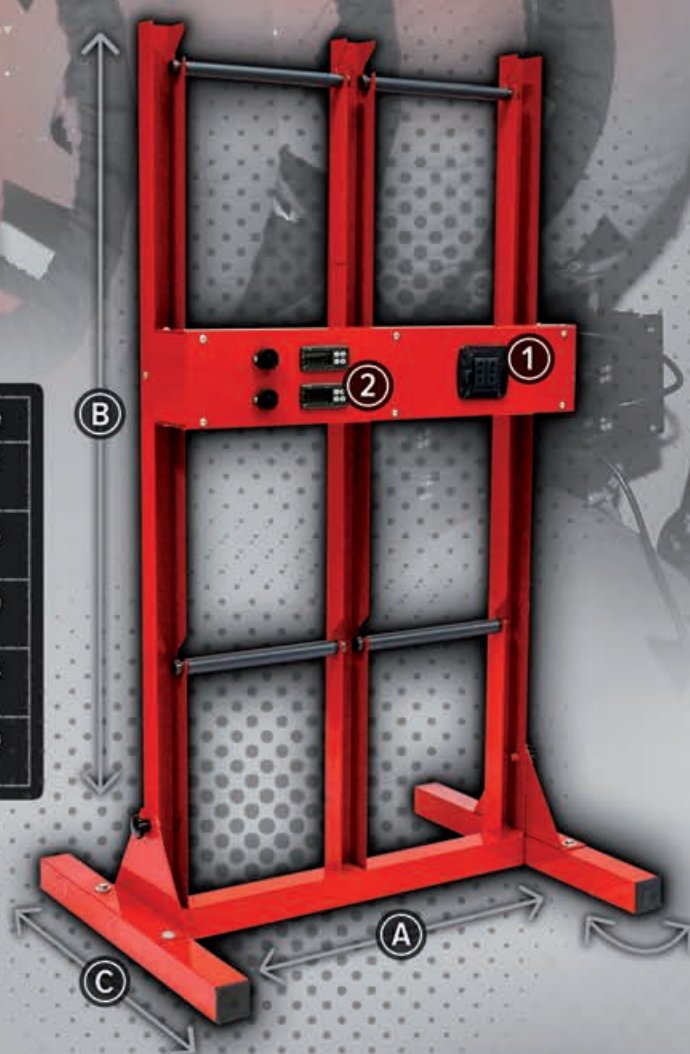
** fixed standing bases / * folding standing bases

Pivot wheels diameter (included):

Front Ø20mm | Rear Ø24mm

Power cable (2mt):

100-230V with blue industrial plug





TECHNICAL PARTNER:



WHEELS "PADDOCK CARRIER"

This trolley has been developed according all "staff team" instructions. So the material is the aluminum for lightness and rigidity, removing only 8 screws you can disassemble the structure, and its crosses may be required in different lengths depending on personal needs.

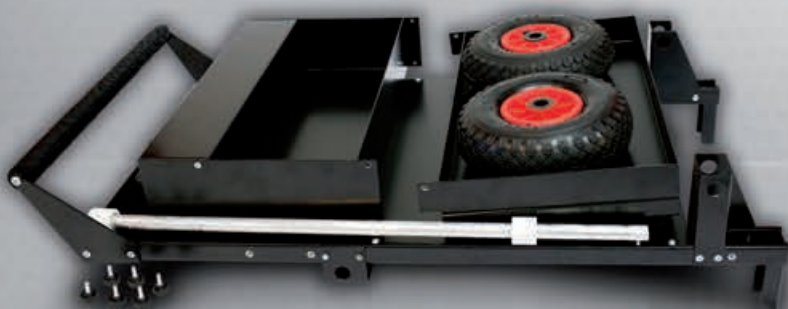
The design is studied to ensure the smallest size but also the best stability. The side shoulders are calculated to minimize the possibility to damage the rims or avoid that the technicians crush their hands pushing it. The wheels are in rubberized ABS to have an excellent durability and be able to absorb the roughness of the floor. Their diameter of 125mm allows it to overcome all obstacles in the paddock.

STARTING GRID CARRIER "GRID CADDY"

CAPIT designed this product as a "portable MAMMUTH".

All the electrical and electronics parts are integrated. Only the power plug is external so it can be connected to the generator when you are on the grid or to the electric circuit network when you are into the garage. The frame is made of lightweight aluminum (less than 10kg), can be disassembled in few minutes removing only 6 screws and can be closed into a minimum space (l.506 x h.1020 x d.210).

- ① The versions **SPINA2** (1 bike set) and **SPINA4** (2 bike sets or 1 car set) manage our tyrewarmers model SUPREMA SPINA and SUPREMA VISION.
- ② The versions **LEO2** (1 bike set) and **LEO4** (2 bike sets or 1 car set) manage our tyrewarmers model SUPREMA/FACTORY LEO.



TECHNICAL PARTNER:



capit[®]



WHEEL-TYRE BAGS

CAPIT has thought one simple and practical product to transport your set of rims/tyres easily without damaging them.

The product is available, on request, in all tyrewarmers colors and with personalized LOGO.

BOX STOOL

This stool is one of the simplest accessories most appreciated by mechanics who work in the paddock. This product contains all the features necessary for its proper use.

The wheels are made of nylon with diameter of 50mm to ensure high strength and excellent sliding. The base has one size 370mm x 350mm to ensure the best stability.

It's equipped with a tray where you can store various objects and even a retractable drawer where you can keep some useful tools.





TECHNICAL PARTNER:



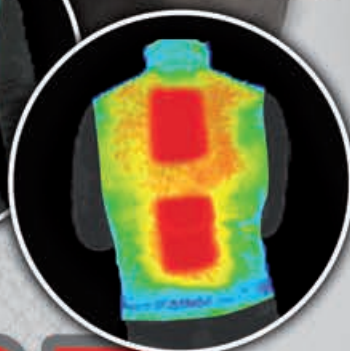
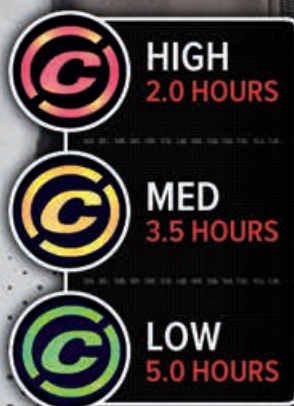
WARMME | Heating waistcoat

During cold periods, often we are dressed improperly respect to temperature and activity performed. With WARMME today you can feel better, you can decide the best temperature depending on the activity or the environment in which you are, whatever type it is.

Built with Soft Shell fabric, it is thin, retains heat but is breathable and it is water-proof/wind-block. Studied to be worn under any jacket or coat (but as outerwear too), adapts to the different clothing used, WARMME is perfect for work, sport, hobbies and all outdoor activities.

Details are the difference:

- One invisible circuit with flexible and ultra-flat hotplates
- One single "Easy touch" button (to be used without taking off gloves) to select one of the 3 temperatures available
- Lithium-ion battery smaller, lighter and rechargeable quickly
- Double side zip for a perfect fit to the body always
- Zip pullers and "easy open" flaps on double inside pockets



WARMME



WPA415
Rechargeable lithium-ion
battery (spare)

WPA420
12V plug car battery charger



WPA425
100V battery charger

TECHNICAL PARTNER:



capit[®]

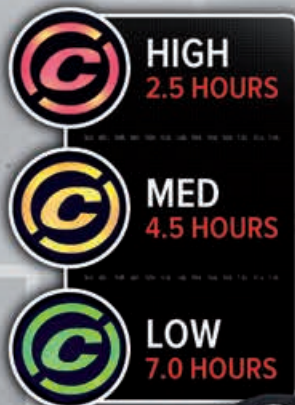
WARMME | Heating gloves

A Glove designed to ensure maximum comfort yet attractively designed, and perfect for all outdoor uses. Made with professional breathable materials that offer light weight and strength, wind and rain resistance.

The heating circuit follows the hand profile, radiating heat in every part (even on fingers) ensuring maximum benefits even at the lowest temperatures.



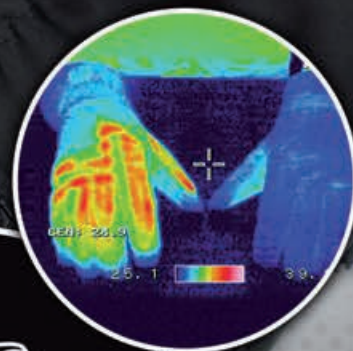
3M
Thinsulate
INSULATION



HIGH
2.5 HOURS

MED
4.5 HOURS

LOW
7.0 HOURS



WPA515

Rechargeable lithium-ion
battery (spare)



WPA520

Charger cable for glove
batteries pair (spare)



WWW.CAPIT.IT





CAPIT PERFORMANCE SRL

Via Newton, 12 - 20016 Pero (MI) - Italy

Tel: +39 02.3533300 | Fax: +39 02.33913538

Web: www.capit.it

Email: info@capit.it

Facebook: www.facebook.com/capitperformance

